



Curtain Type Fire Protection DAMPER

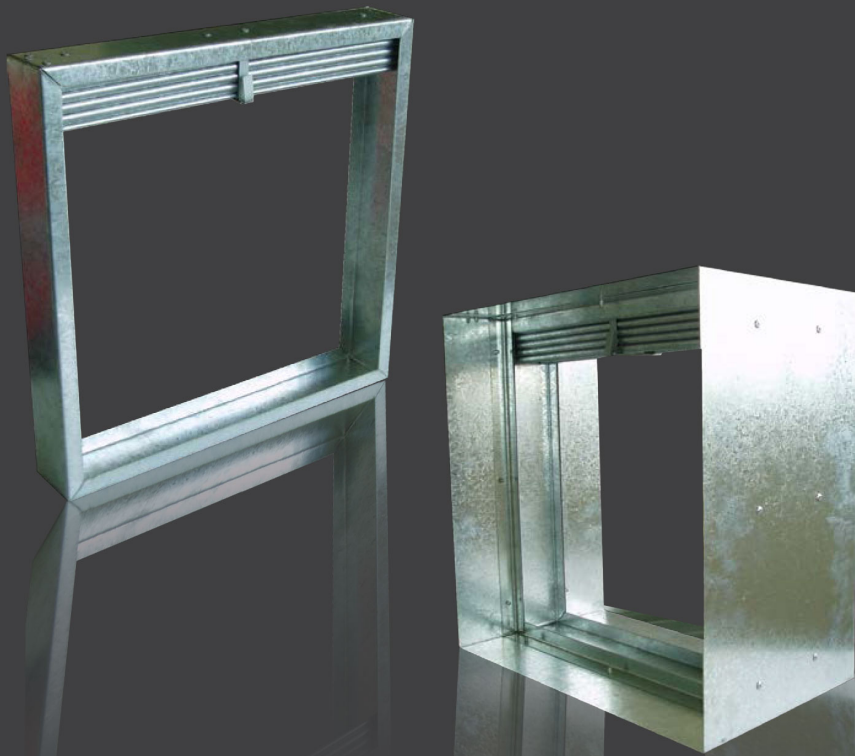


Curtain Type Fire Protection Damper were tested under HOKLAS accredited laboratories in compliance with

- ✓ **BS476 : Part 20 : 1987**
Fire Resistance Test to Building Material
- ✓ Approved by Hong Kong Fire Service Department
- ✓ Up to 4 hours fire rating
- ✓ Single side installation method
- ✓ Light weight



CURTAIN TYPE FIRE PROTECTION DAMPER



- Maximum up to 4 HRS. F.R.P.
- Complied with BS 476, Part 20
- Approved by H.K.F.S.D.
- Easy and simple for installation
- Suitable for large opening



QUALITY PROVED & FLEXIBLE DESIGN

TANDA is the first fire damper series using Single Mounting Angle. The interlocking blade and curtain type design have successfully complied with the BS 476: Part 20 and qualified for 4 hours fire resistance.

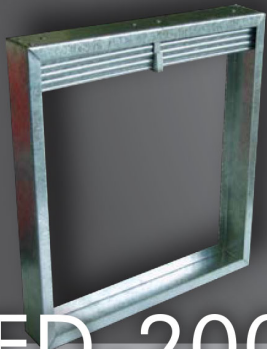
Our series of fire dampers are suitable for both vertical and horizontal installation. It can be tailor-made in different sizes and shapes and installed at different places such as concrete/partition wall, ceiling, floor, fire rating board/door and louver opening.



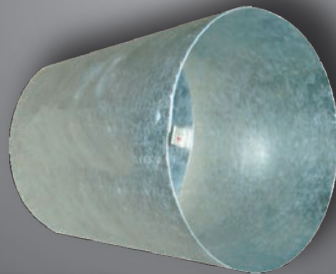
TFD-100
Type-A



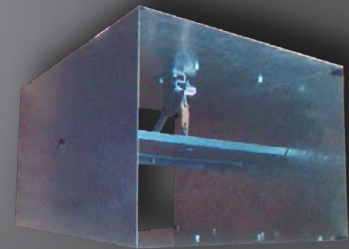
TFD-100
Type-B



TFD-200



TFD-300



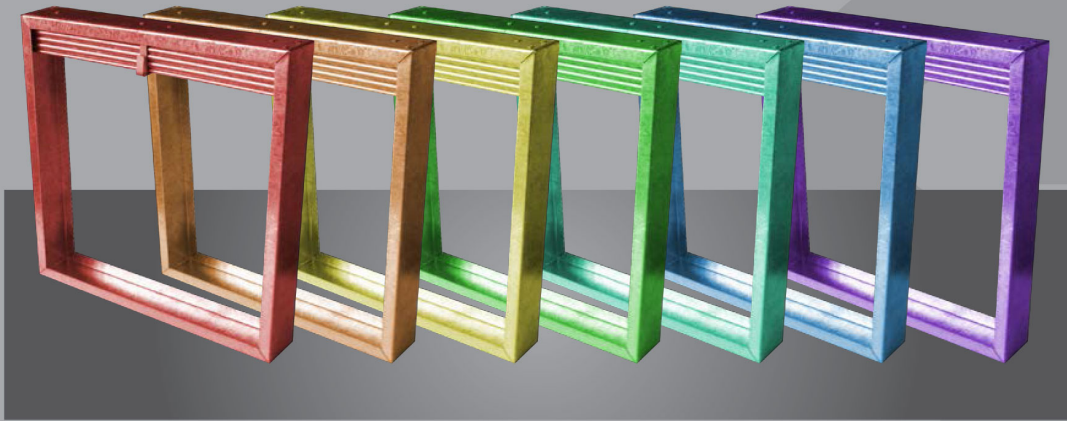
TFD-400

PRODUCT SERIES

- 1) TANDA TFD-100 for air duct system
- 2) TANDA TFD-200 for door and louver system
- 3) TANDA TFD-300 for circular duct system
- 4) TANDA TFD-400 for small rectangular duct system

SPECIAL FEATURES FOR YOUR SPECIAL NEEDS

- TANDA fire dampers provide a series of choices with unlimited size to fit in different types of building construction.
- Apart from galvanized fire dampers, stainless steel dampers are also available.
- Numerous choice of coloured paint can be coated onto the G.I. surface for matching the original interior.
- Mounted with UL 68 degree C fusible link / ETL,



PERFECT INSTALLATION

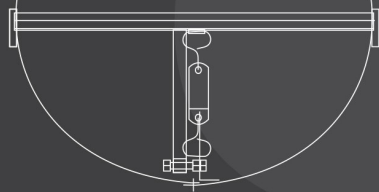
The Single Mounting Angle design makes installation at ease. Light weight characteristic also make TANDA fire damper easy to be handled. Custom-made size makes TANDA fire damper perfectly fit into your designated area.

QUALITY TESTING

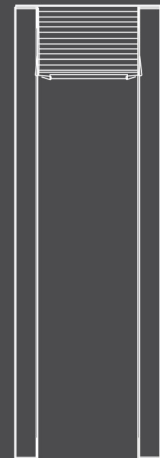
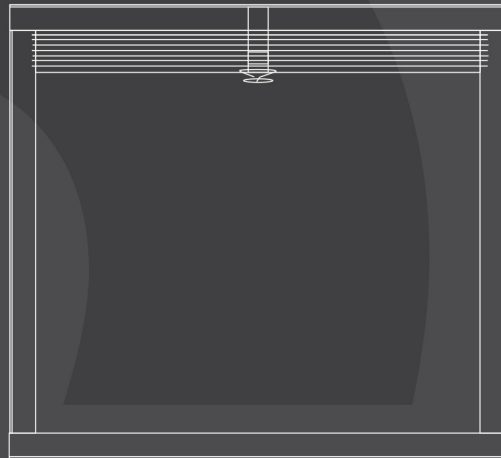
- Valid laboratory test report from BRANZ, New Zealand
- Complied with the BS476: Part20 (up to 4 hours F. R. P. performance)



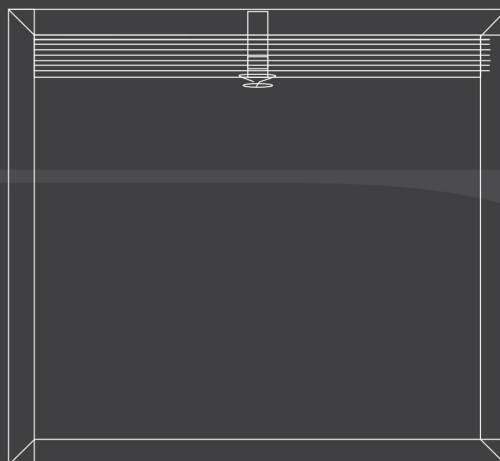
TANDA TFD-300 Fire Damper



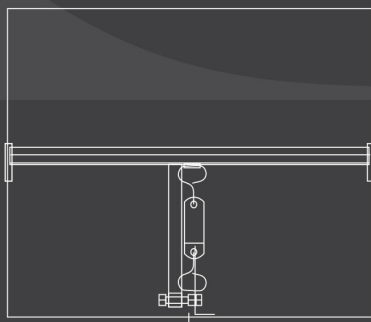
TANDA TFD-100 Fire Damper



TANDA TFD-200 Fire Damper



TANDA TFD-400 Fire Damper



Tanda International Co., Ltd.

Tel : (852) 2156 9796

Fax : (852) 2156 9798

E-mail : sales@tanda.info

Website : www.tanda.info

Approval Distributor:

Job Reference - Fire Damper



David-Trench Rehabilitation Centre



Victoria Park Swimming Pool Complex



Venetian 5 & 6 Macau



The Latitude

Job Reference - Fire Damper



HKU Centennial Campus



Fire Damper Job Reference

Item	Project
1.	G/F, 108 Jervois Street, Sheung Wan
2.	G/F, Shop 3, 406-408 King's, North Point
3.	G/F, Shop 8-14, 2-4 Chatham Court, TST
4.	Tsuen Wan Raw Water Pumping Station
5.	港利道新會學校
6.	Shatin Centre CLP
7.	Tsuen Wan 328
8.	Princess of Wales Hospital
9.	Hin Tin Swimming Pool
10.	Landmark fitting out
11.	Edinburgn Tower
12.	Discovery Bay Plaza
13.	大西洋銀行 Macau
14.	Lan Kwai Fong Pret
15.	Diamond Hill Crematorium 火葬場
16.	ICAC
17.	Starworld Hotel Macau
18.	San Tin Main Road, San Tin Lot 215 Yuen Long
19.	西部通道
20.	Sewage Treatment Plant Shatin
21.	澳門人民入境事務署
22.	1-3 Ash Street Tai Kok Tsui
23.	Rehabilitation Block Tuen Mun Hospital
24.	Board Way Wanchai
25.	896 Canton Road
26.	中葡中學 Macau
27.	PPT Tin Shui Wai, Area 33, Yuen Long
28.	Venetian Hotel 8041
29.	Disneyland Resort BOH 614
30.	Hung Hom KCRC
31.	沙田馬場學校
32.	寰宇天下 Macau
33.	Kornhill Garden Sai Wan Ho
34.	275 KV Sub Station Marsh Road
35.	St. Margarida LPG Room Macau
36.	No . 1 Peking Road, Bank Sino
37.	HKU
38.	CAS HQ and FSD Rescue Training Centre Package 6



Fire Damper Job Reference

Item	Project
39.	Mass Mutual Tower
40.	將軍澳寶翠花園
41.	澳門金都酒店
42.	機鐵九龍站
43.	地鐵柴灣車廠
44.	Japaness Rest. At Langham Place Hotel
45.	福建中學
46.	威靈頓街 31 號 5 樓
47.	澳門電訊
48.	St. Paul's School
49.	海港城海運大廈 G16 鋪
50.	Maxims Tuen Mun
51.	Tseung Kwan O HAESL Phase 4
52.	Harcourt House, 39 Gloucester Rd., Wan Chai
53.	Hung Hom Estate Phase II DG Rm
54.	Taikoo Place, Cornwall House 18/F
55.	鯉魚門廣場
56.	B2 Langham Place
57.	華都賭場
58.	CLP Sham Chun Street
59.	何文田戒毒所
60.	Ocean Park
61.	Grand Lisboa Hotel
62.	HKU Space Po Leung Kuk Community College
63.	RT Langham Place L12-13
64.	IFC Phase 2
65.	Gas Station Macau
66.	HK Sanatorium Hospital
67.	澳門濠景花園 2A
68.	Choi Wan Road Site 1 Phase 3
69.	CLP - Wai On Street
70.	Lung Kwn Tan Power Station D.G. Romm, Tuen Mun
71.	中環安慶台安慶大廈 3/F
72.	MCI Worldcom at Sino Favour Centre, Chai Wan
73.	Tai Po Sewage Treatment Works Stage 5 Phase 1
74.	Rehabilitation of Lai Tak Tsuen, Tai Hang
75.	葵涌邨商場
76.	沙田河畔花園



Fire Damper Job Reference

Item	Project
77.	Lnicoin House, Tai Koo Place 4/F
78.	52-54 Fuk Tsun St., Tai Kok Tsui
79.	深水埗富昌商場大快活
80.	西灣河康怡花園
81.	Cheung Sha Wan Government Office
82.	中環中心
83.	將軍澳唐德街 Lots 72, Area 56, Job no : 3201
84.	筲箕灣新成街新成中心 C 座地下泵房
85.	荃灣美達中心 8 樓
86.	北角電器道 148 號地下 - 大快活
87.	HK Baptist Hospital Phase 4 to 7
88.	A Primary School in area 31, Sheung Shui, N.T. (SS R308)
89.	澳門黑沙灣君悅灣 U1 地段
90.	上水彩園邨商場
91.	The Pawn Restaurant at 62 Johnston Road, Wanchai
92.	Sui Fai Factory Estate, Fo Tan N.T.
93.	港鐵火車站 - 南昌
94.	港鐵火車站 - 大圍
95.	港鐵火車站 - 羅湖
96.	Cyberport Phase IV
97.	瑪麗醫院
98.	黑沙灣君悅灣第二期
99.	Po On Road Market & Cooked Food Centre
100.	屯門河田街 2 號東亞紗廠 oil tank room
101.	Prosche Service Centre at 7 Wang Tai Road
102.	Tseung Kwan O Sports Centre
103.	Hiu Kwong Street Primary School
104.	Lok Fu Dry Market
105.	Lung Poon Court at Diamond Hill
106.	Pok Fu Lam VTC Training Hotel
107.	The Construct of Two Primary School in Area 13, Yuen Long
108.	灣仔伊館
109.	灣仔肇輝臺高主教院 (1)
110.	Pok Fu Lam International Christian Quality Music Secondary at Po Kong Village Road, Diamond Hill VTC Training Hotel
111.	Diamond Hill SSR305
112.	洛克道 487-489 號
113.	上水鳳溪小學



Fire Damper Job Reference

Item	Project
114.	King's Park Sport Centre
115.	Pok Fu Lam VTC Training Hotel Zone A 6/F
116.	A Whole-day Primary School for Fung Kai Public School at Jockey Club Road, Sheung Shui
117.	Venetian Macau Phase 2
118.	Po On Road Market at Cheung Sha Wan
119.	Po Lam Estate Shopping Centre Tseung Kwan O
120.	西灣向輝大廈 Genset Rm
121.	長沙灣田氏工業大廈
122.	Jadine's Lookout
123.	Tin Shui Wai Area 31 Phase 1
124.	4/F Cityplaza South for Taikoo Shing Cityplaza
125.	The Pacifica at 9 Sham Shing Road
126.	葵涌葵盛圍
127.	上水粉嶺公路 1 號高爾夫球場會廚房
128.	沙田醫院
129.	舊山頂道婦女會
130.	金碧賭場
131.	21 Lyndhurst Terrace at Central
132.	澳門營地街市 3/F 改善工程
133.	A & A Works of STAS and Commercial facilities at Mong Kok East Station
134.	Basement New Toilet for Po On Road Market
135.	中環軍營
136.	Ma Hang Prison
137.	英皇珠寶鐘錶 - 皇后大道中 35 號地下
138.	愛秩序灣街市
139.	HKBank, Sing Wo Rd., Happy Valley
140.	Lok Fu Shopping Centre (Phase I), Wang Tau Hom
141.	Pui O Substation
142.	Kowloon Sports Centre (Lai Chi Kok)
143.	APITA Department Store at Taikoo Shing
144.	N199- Discovery Bay Hotel
145.	Kowloon Sports Centre (Shek Kip Mei)
146.	Renovation Works at Choi Yuen Shopping Centre, Sheung Shui, N.T.
147.	葵涌道 133 號 光輝圍安老院
148.	北角馬寶道 28 號，華匯中心地下
149.	



Fire Damper Job Reference

	Project
150.	元朗商會小學
151.	道風山
152.	1 King Fung Path, Tuen Mun
153.	Castle Peak Power Station
154.	18/F of The Great Eagle Centre
155.	Macau MGM Hotel
156.	SW019 - SHP Battery Room
157.	馬鞍山消防局
158.	大埔污水廠
159.	SW017 - POR Substation - Battery Room
160.	2/f Skyway House, Tai Kok Tsui
161.	澳門駿青活動中心
162.	Stonecutters Island
163.	那打素醫院
164.	KCRC - Lok Ma Chau Level 1 & 2
165.	34-36 Fau Tsoi Street, Kwong Wah Centre, Yuen Long
166.	澳門體育發展局
167.	Contract No. SS S303 A Special School at Cornwall Street, Sham Shui Po
168.	PWH LA5
169.	油麻地大華銀行
170.	SS S308 - Primary School in Sham Tseng
171.	夢幻水世界
172.	Police HQ - DG Store
173.	HAECO Hanger No.3A
174.	Swimming Pool for Tai Po Old Market Primary School in Area 1, Tai Po
175.	Po Leung Kuk Choi Kai Yau School at 6 Caldecott Road
176.	HK Baptist Hospital Phase 6 of Operation Theatre at 1/F Main Block Bldg.
177.	Shek Yam Estate
178.	One Pacific Heights at 1 Wo Fung Stret, Sheung Wan
179.	A & A Works at CFS Complex Building at Berth 3 Container Post Road, Kwai Chung, N.T.
180.	Sheung Shui 231
181.	Lok Fu Shopping Centre Phase 2
182.	澳門青洲海關海上監察廳辦公大樓
183.	Satellite Remote Sensing Ground Receiving Station Phase II, CUHK



Fire Damper Job Reference

Item	Project
184.	廣州黃金時代
185.	荃灣地鐵車廠
186.	Shatin CLP
187.	Proposed Legacy Church, 14-18 Dorset Crescent & 1B Cornwall Street, NKILs 924, 925 & 926, Kowloon TongCastle Peak Power Station
188.	葵涌救護站
189.	中環皇后大道中 33 號萬邦行
190.	Renovation of rom 608, Lab Block, FMB for Eye Institute - HKU
191.	SSR 323 Tai Pak Tin Street Primary School
192.	荃灣路德圍 34 號地下
193.	灣仔聖雅閣福群會
194.	荃灣楊屋道 168 號灣 - 國際訊通中心
195.	青洲社屋 B,C 大樓
196.	灣仔告士打道 108 號-大新金融中心 6 樓
197.	瑪麗醫院 B5 病房
198.	Addition of one storey on flat roof of Wing GH Podium Floor The Hong Kong Polytechnic University
199.	長沙灣宇晴軒
200.	大埔教育學院
201.	馬會山光道會所
202.	澳門科學館
203.	Castle Peak 'B' Emission Control Project
204.	沙田仁安醫院
205.	HKJC - Shatin Racecourse
206.	西洋菜街 101 號 2/F, 3/F
207.	澳門日報停車場
208.	亞洲博覽館
209.	幸福中心 B2
210.	澳門科學館
211.	Kwai Fong Shopping Centre - Fairwood
212.	中文大學國楸樓
213.	瑪麗醫院 J2 病房
214.	那打素醫院 J2 病房
215.	九龍城廣場 2F 甜品屋
216.	Tuen Mun VTC
217.	創紀之城第 5 期



Fire Damper Job Reference

Item	Project
218.	深圳星河 COCOPARK 一樓 L1-J06 商鋪
219.	Pamela Youde Nethersole Eastern Hospital
220.	St Teresa's Hospital - OT-16
221.	歌連臣角懲教所
222.	Tin Shui Wai Area 104
223.	鯽魚涌華蘭路港島東中心
224.	澳門新葡京
225.	鴨脷洲街市
226.	G/F, 233 Des Voeux Road West
227.	鯽魚涌華蘭路港島東中心
228.	聯合醫院
229.	銅鑼灣本德大廈
230.	灣仔海港中心 10 樓選舉事務處
231.	Hong Kong Central Library
232.	The Queen Elizabeth Stadium
233.	Matilda International Hospital
234.	Primary School at Inverness Road
235.	Choi Wan Road Site 2 Phase 1
236.	元朗鳳翔路 2 號
237.	Improvement to Victoria Park Tennis Centre (ALR 315)
238.	Tin Shui Wai Chung Fu Shopping Centre - Fairwood
239.	新城市中央廣場大快活, Shop no. 502
240.	Renovation of Decoction Room, LG207A on LG2 Estates Building for School of Chinese Medicine
241.	柴灣八號廣場
242.	Matilda International Hospital - Boiler Room
243.	沙田白石角小食亭
244.	東隧 6 期
245.	YMCA of Tsim Sha Tsui
246.	The Existing Academic Building at The Hong Kong University of Science and Technology
247.	鷹君中心 1809-1811 室
248.	Castle Peak 'B' Emission Control Project
249.	Hei Ling Chau Treatment Centre DG Store 1 & 2
250.	屯門中電
251.	烏溪沙利安邨
252.	德輔道西 296-302 號
253.	Jockey Club Elaine Field School in Area 9, Tai Po



Fire Damper Job Reference

Item	Project
254.	Contract No. SS R314 - Construction of Joint-User Complex and Wholesale and Wholesale Fish Market in Area 44, Tuen Mun
255.	CUHK Store No. 3 Toilet
256.	Discovery Bay Phase 14
257.	干德道 16-18 號
258.	順利邨商場牛房
259.	荃灣醫院
260.	133 Lung Mun Road, Tuen Mun
261.	澳門海茵怡居
262.	香港仔市政大樓
263.	Taikoo Place One Island East 67/F
264.	The Queen Elizabeth Stadium
265.	機場狗房
266.	銅鑼灣富豪酒店 (鼎泰豐)
267.	竹園村牛房
268.	尖沙咀北京道 1 號 8 樓 801 室 - 金膳韓國料理
269.	北角學校
270.	SST304, The Construction of A Secondary School at Development Near Choi Wan Road and Jordan Valley, Kwun Tong
271.	SS T309 Primary School at Shek Kip Mei Phase 4, Sham Shui Po
272.	No. 3, 28 St. Hong Lok Yuen, Tai Po
273.	Diamond Hill Funeral Parlor
274.	Queen Elizabeth Hospital - Mortuary
275.	赤鱗角機場空運中心
276.	Redevelopment of Li Shu Fan Site, Phase 1, HKU
277.	富善村商場
278.	北角危險倉
279.	CUHK
280.	官塘開源道鱷魚恤中心 1 字樓 8 室
281.	東隧 5&6 期
282.	屯門石排頭路 15 號翠林花園地下 16 號舖悅明苑海鮮酒家
283.	馬鞍山健康中心
284.	Hei Ling Chau Treatment Centre
285.	西環醫院道 34 號菲臘牙科醫院



Fire Damper Job Reference

Item	Project
286.	Improvement to Victoria Park Tennis Centre (ALR 315)
287.	澳門望夏地盤
288.	Concordia Lutheran School at No. 12 Tai Hang Tung Rd., Sham Shui Po
289.	中環德輔道中 144-148 號安泰大廈
290.	尖沙咀美麗華商場
291.	Lok Ma Chau MTR Station
292.	中環威靈頓街 2-8 號威靈頓廣場 6 樓-大喜屋日本料理餐廳
293.	Secondary CUM Primary in Area 13, Yuen Long
294.	YMCA of Hong Kong Beacon Centre Life-Long Learning Institute
295.	Kowloon Tong Bishop Walsh Catholic School
296.	Contract 704- MTR West Island Line
297.	Columbarium Generator Room Macau
298.	Contract 704- MTR West Island Line
299.	澳門新葡京 42 樓
300.	ASD SS S307 Construction of Two Primary Schools at Fuk Wing Street, SSP
301.	澳門外港碼頭 VIP
302.	Hong Kong Science Park, Phase II, Building 20
303.	樂富五十嵐餐廳
304.	Hong Kong Baptist Hospital
305.	澳門凱旋門酒店 9 樓